



BRP BUDS3 Flash From Local File Procedures_144748

Summary:

Procedures on how to flash from local file

Type:

General

TST Detail:

Detail:

In very rare circumstances, you may need to manually enter a file into a module on a BRP product if it does not automatically populate.

Problem:

Flash file not available or a service part flash is not correctly populated in BUDS3, follow the solution.

Solution:

This is done by BRP granting higher privileges in BUDS3 to the user profile name and then attaching the file needed directly to a case or S-filer. Start a Technical Troubleshooting or Reporting case in BOSSWeb, attach the BUDS file to the case and inform the service rep. of the profile name you are using to access BUDS3. The service rep. will grant the privileges of the user name to the needed function and request the correct file from Engineering. To activate the higher privileges once granted, you will need to log out of BUDS3 on that computer. Then, log back into BUDS and enter your user name and password. Once you log back into BUDS3 the privilege should be visible at the bottom of the screen in the user settings page.

Informations

Dealer number your-email.adress@provider.com
 Dealer name BRP
 Technician name Marc-andre Beaubien
 Profile Dealer technician


Software

Version 1.05.004
 Checksum DDBF
 Update ● UPDATE

INSTALL NOW

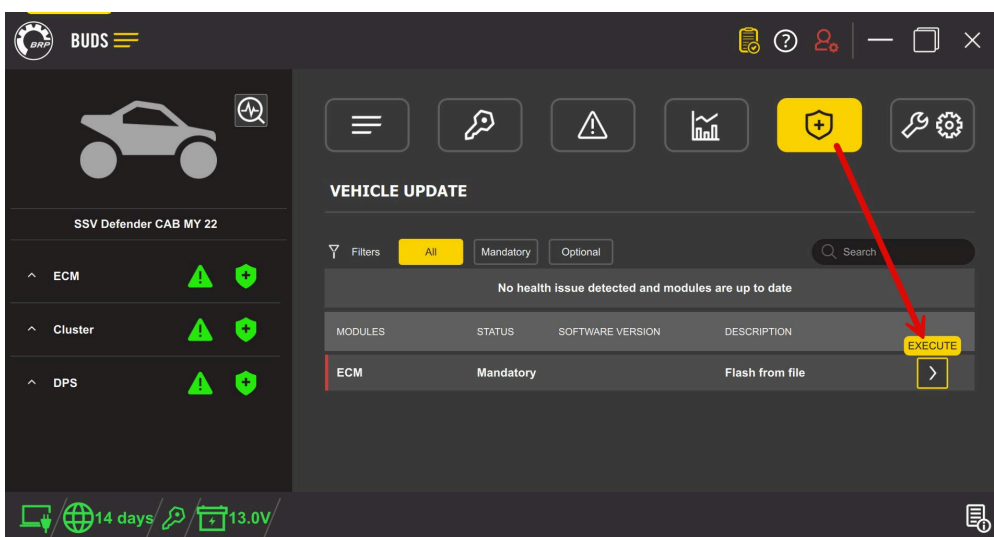
Temporary Privileges

A-la-carte_FlashManual_ECM



You will now need to download the attached file from the service case to the BUDS3 computer. Once the file is downloaded you can scan the unit, and select the Vehicle Update screen. You will see a line in the updates list that says “Mandatory - Flash From File”

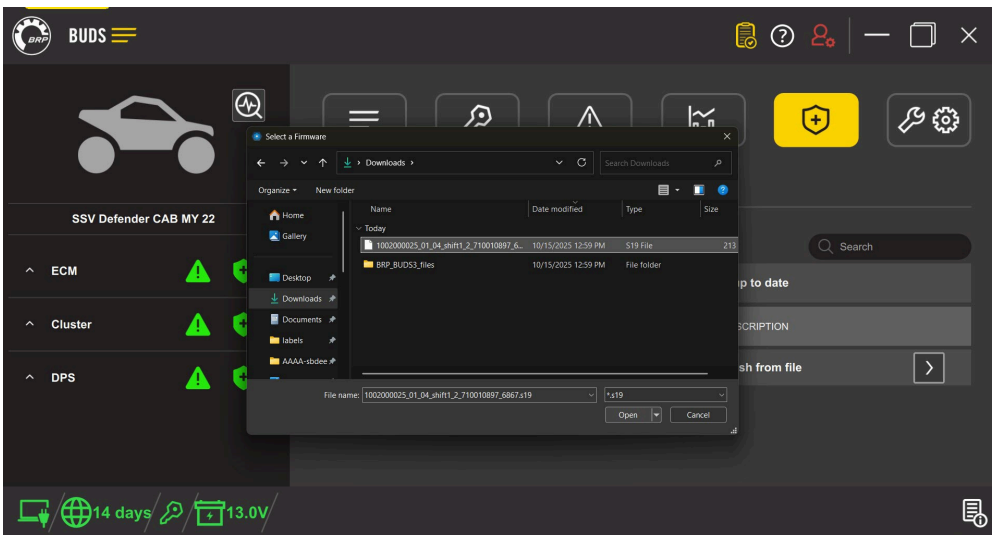
Click on the arrow on the right, making sure you are flashing the correct module.



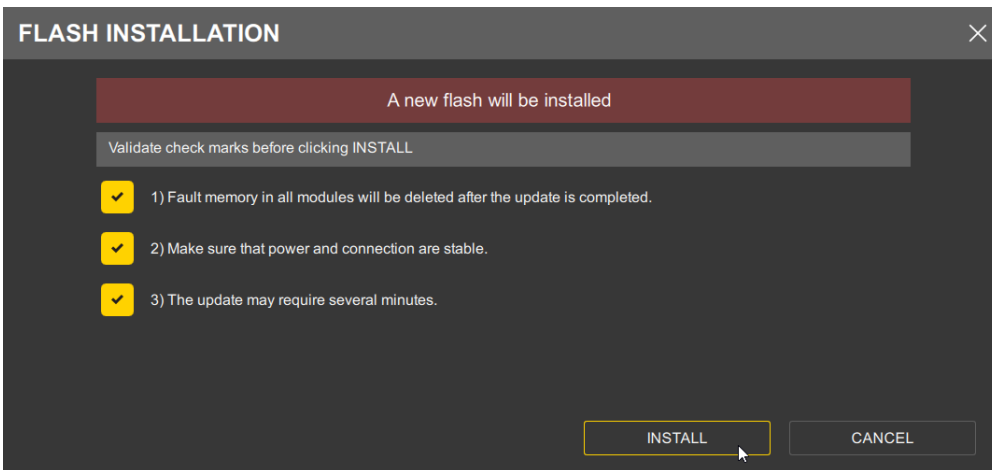
The screenshot shows the BUDS3 interface with a sidebar on the left displaying vehicle information for 'SSV Defender CAB MY 22' and a list of modules (ECM, Cluster, DPS) with status indicators. The main area is titled 'VEHICLE UPDATE' and shows a table of updates. A red arrow points to the 'EXECUTE' button in the table row for the ECM module.

MODULES	STATUS	SOFTWARE VERSION	DESCRIPTION	
ECM	Mandatory		Flash from file	EXECUTE

Warning : please only select the correct module name you are wanting to install the flash with, you don't want to incorrectly install a file. Select the file from the downloads folder, once the correct file is selected you can install the flash.



Acknowledge the prompt and the process will start.



The unit may need to fully power down and re-scan with BUDS3 to confirm the flash has been successfully installed.

Attachment:

First Published By: Craig Zakowski on 2025-10-16

Last Modified By: Craig Zakowski on 2025-10-21