

ECM and CLUSTER (BRP) "AS NEW".

In this manual shows step-by-step how to put ECM and CLUSTER modules to its initial state "As New" (zeroing of total hours for SeaDoo 4-TEC (with ECM Siemens/VDO only).

This option is available in the program B.U.D.S. with the privilege Megatech.

For purchasing a license key MEGATECH - please contact your dealer.

Warning!

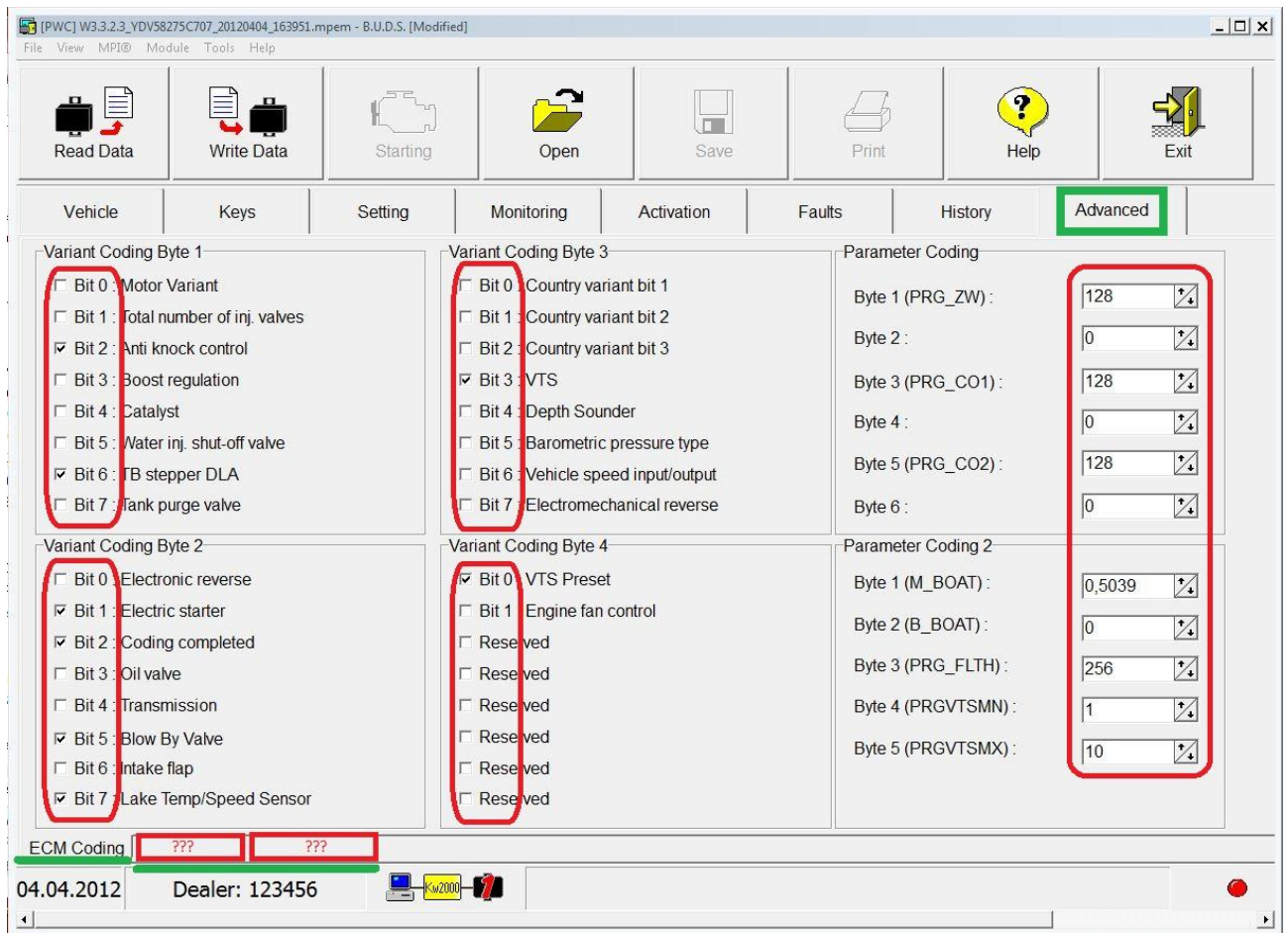
All data of registered DESS-keys will be deleted from the memory of module ECM. Therefore, before executing of this procedure, make sure that you have available DESS Post interface for further registering DESS-keys.

Part 1. Preparations.

- 1.1 Provide a stable power supply 12 volts of the vehicle (the battery of the vehicle must be fully charged).
- 1.2 Connect your PC to a reliable power supply. We recommend that you use a **laptop** with a fully charged battery.
- 1.3 Connect the **MPI-2 adapter** to the USB port on your PC.
- 1.4 Check the cleanliness of the **diagnostic connector contacts** of the vehicle. Connect the **cabl CAN to adapter MPI-2** and to the **diagnostic connector** of the vehicle.
- 1.5 Place the **DESS-key** on the "**Safety Switch**" of the vehicle.
- 1.6 Run **B.U.D.S.** program with the privilege **Megatech**.
- 1.7 Write down on paper or make and save a screenshot of existing data of your vehicle (the user data: **VIN, Engine, Model and Customer Name**).

The screenshot displays the B.U.D.S. software interface. The title bar reads "[PWC] W3.3.2.3_YDV58275C707_20120404_162143.mpem - B.U.D.S.". The menu bar includes File, View, MPI@, Module, Tools, and Help. The toolbar contains icons for Read Data, Write Data, Starting, Open, Save, Print, Help, and Exit. Below the toolbar is a navigation bar with tabs for Vehicle, Keys, Setting, Monitoring, Activation, Faults, and History. The main content area is divided into several sections: Identification, Purchase, Run Time, and Last Service. The Identification section contains fields for Vehicle (VIN): YDV58275C707, Engine: M6598336, and Model: 000177A00. The Purchase section contains fields for Customer: MEGATECH and Delivery Date: 12/04/04. The Run Time section shows Total Hours: 0101h28. The Last Service section shows Done By: ~~XXXXXXXX~~. Red boxes highlight the VIN and Customer fields.

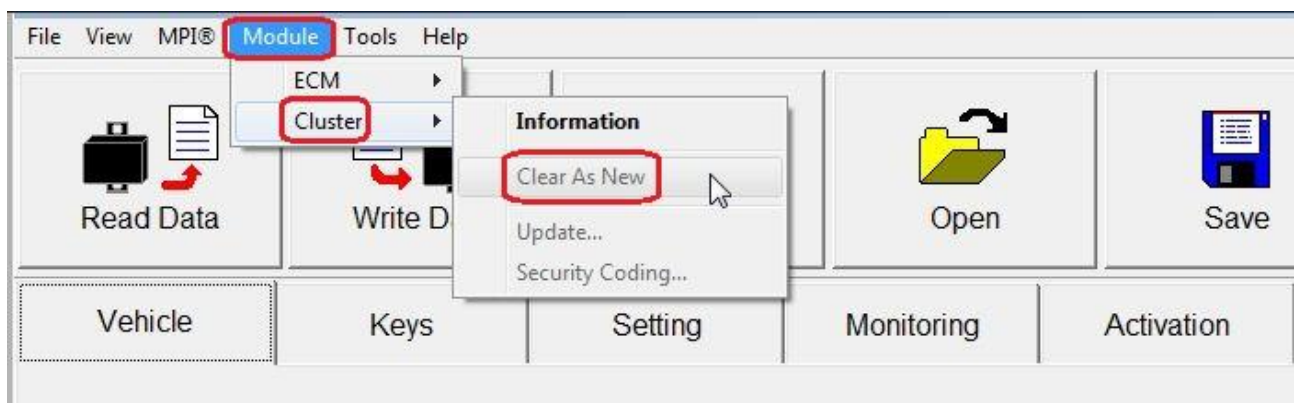
1.8 Write down on paper or make and save a screenshot of existing **advanced data** of your vehicle (specific configuration model of the vehicle: tab "**Advanced**").



1.9 If near the tab "**ECM Coding**" are more tabs **???**, you need to save all those data too.

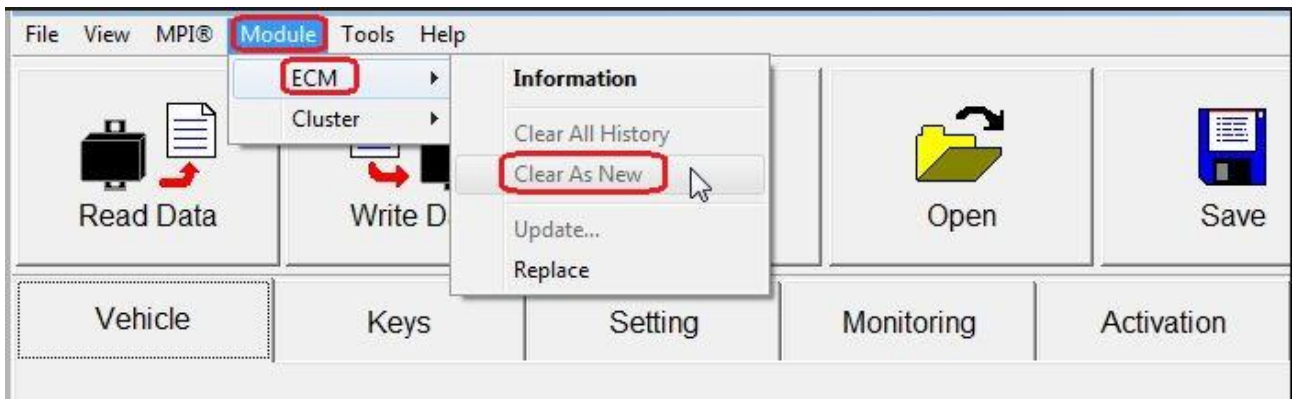
Part 2. Clearing of the modules.

2.1 In the top menu select the tab "**MODULE**". In the drop-down list, select the "**Cluster**" → "**Clear As New**".

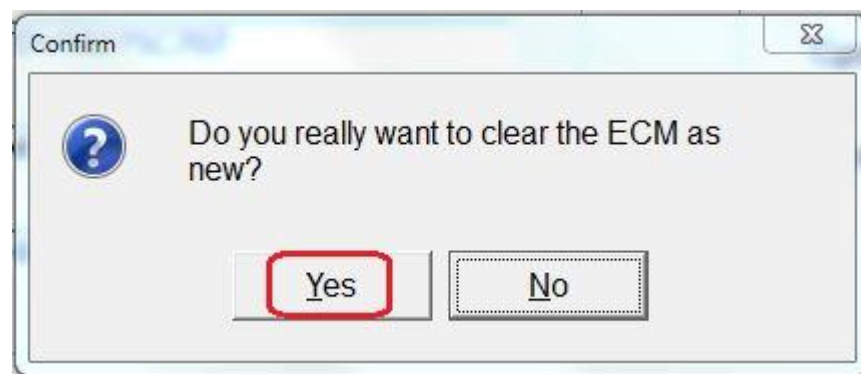


In the next window click "**Yes**".

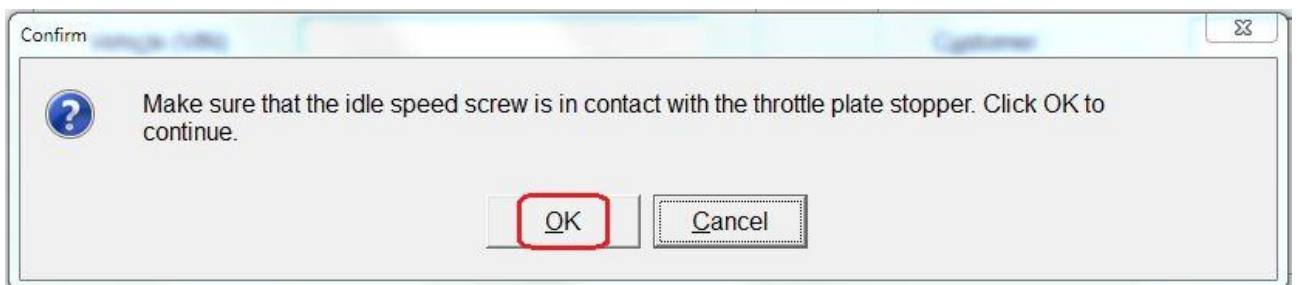
2.2 In the top menu select the tab "**MODULE**". In the drop-down list, select the "**ECM**" → "**Clear As New**".



2.3 Confirm your choice.



2.4 Click on "**OK**" to continue.

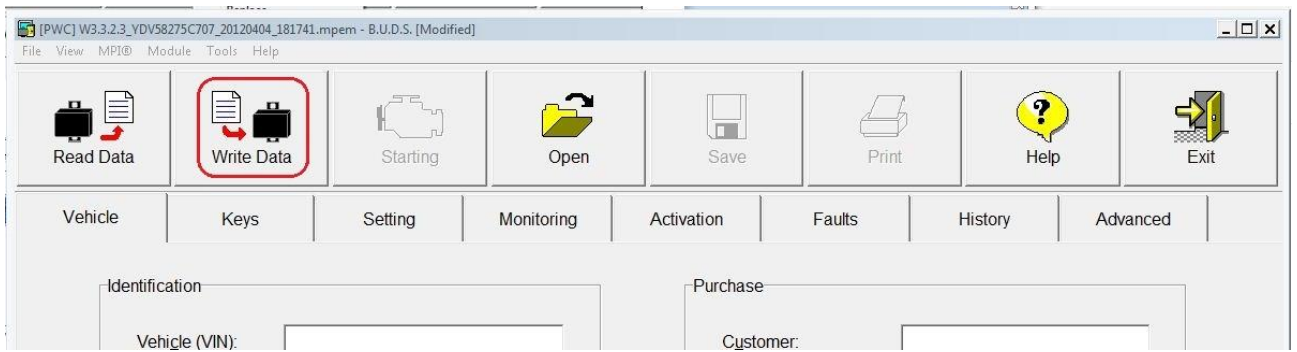


2.5 Remove **DESS-key** from the vehicle post and wait. It may take a few (3 - 5) minutes.

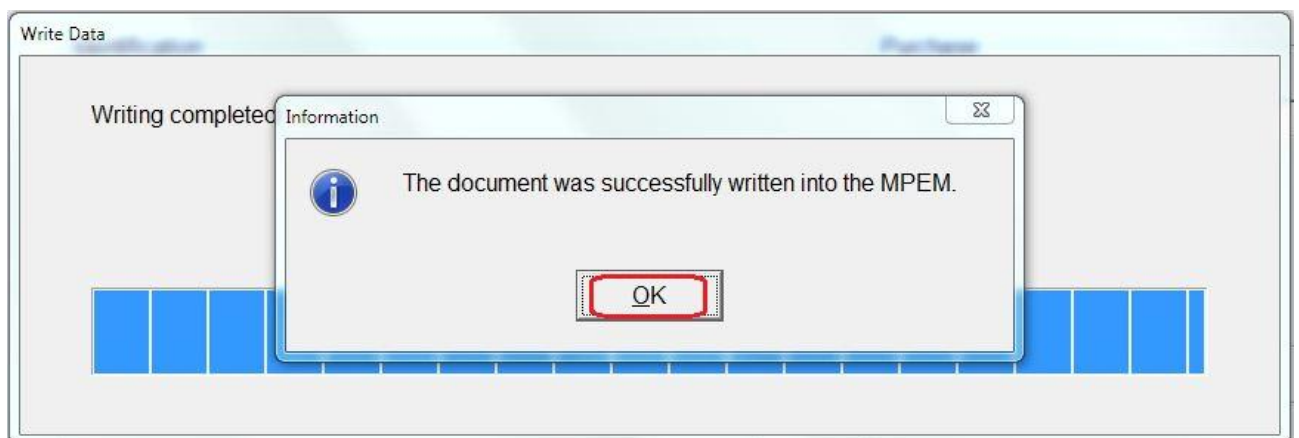
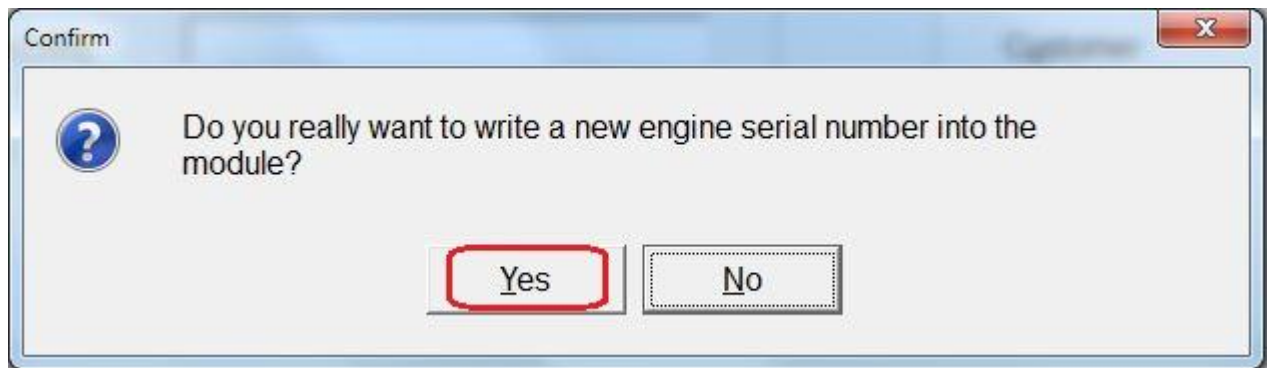
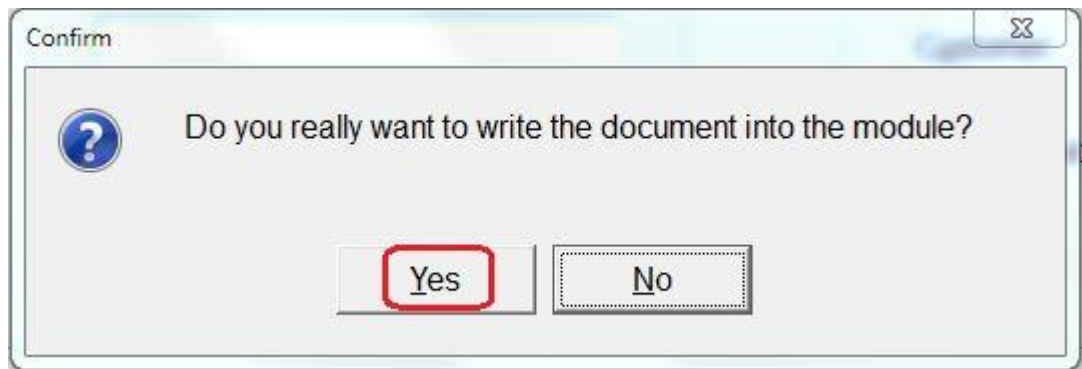


After the message disappear, insert the **DESS-key** again.

2.6 Click on “Write Data”.



2.7 Confirm your choice.



2.8 Close the program by clicking on “Exit”.

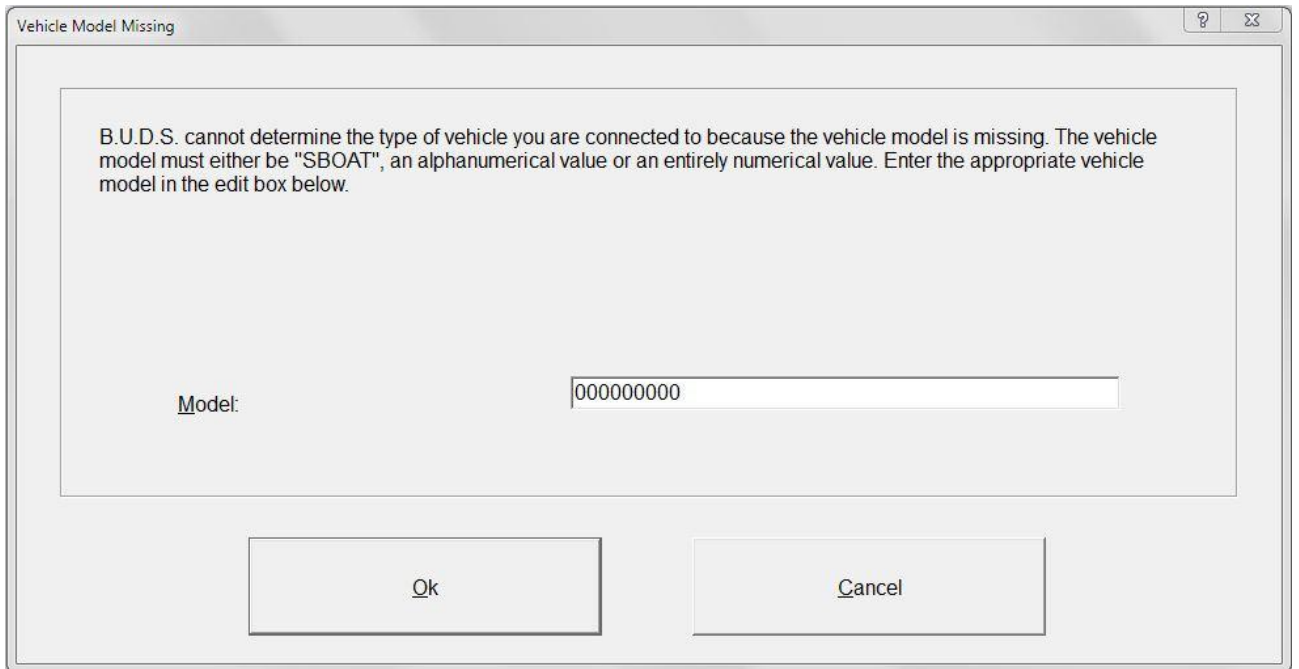
Part 3. Recover user data.

3.1 Run **B.U.D.S.** program with the privilege **PWC Dealer & Sport Boat Dealer**.



Privilege(s):

3.2 Click on “**Read Data**”.

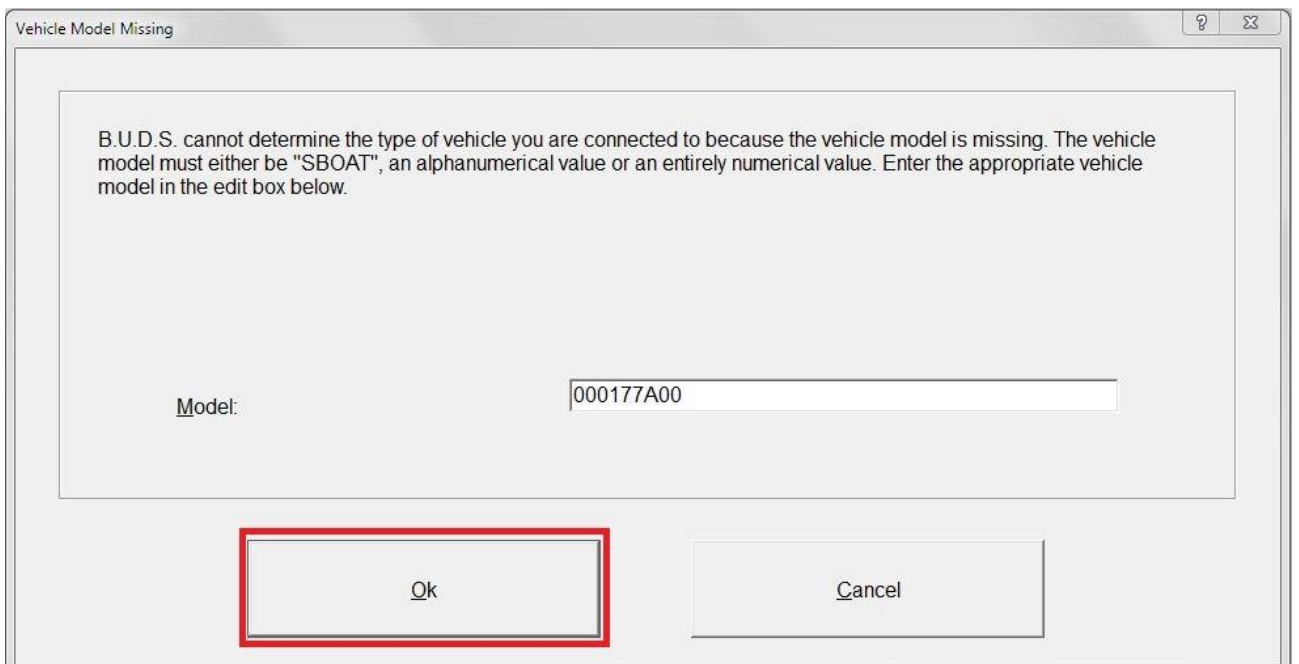


Vehicle Model Missing

B.U.D.S. cannot determine the type of vehicle you are connected to because the vehicle model is missing. The vehicle model must either be "SBOAT", an alphanumerical value or an entirely numerical value. Enter the appropriate vehicle model in the edit box below.

Model:

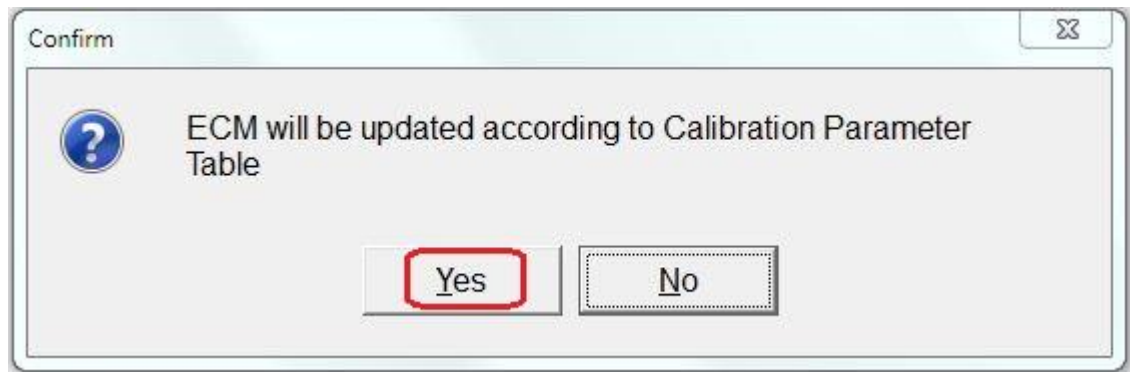
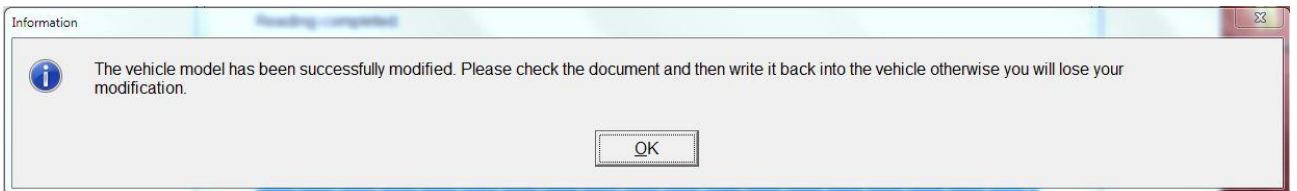
3.3 Enter the **Model** number of your vehicle and click on “**OK**”.



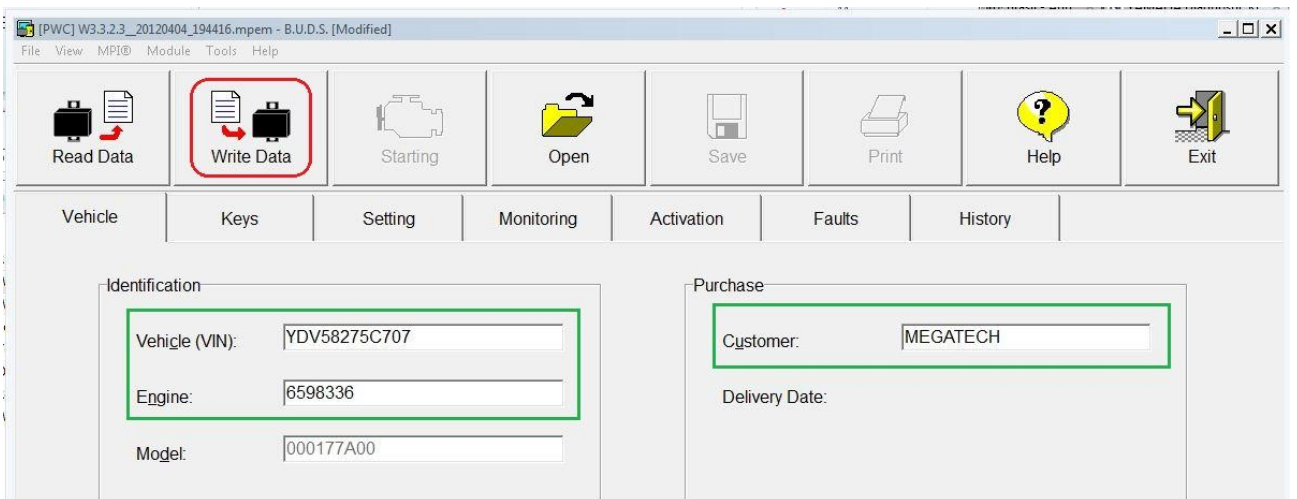
Vehicle Model Missing

B.U.D.S. cannot determine the type of vehicle you are connected to because the vehicle model is missing. The vehicle model must either be "SBOAT", an alphanumerical value or an entirely numerical value. Enter the appropriate vehicle model in the edit box below.

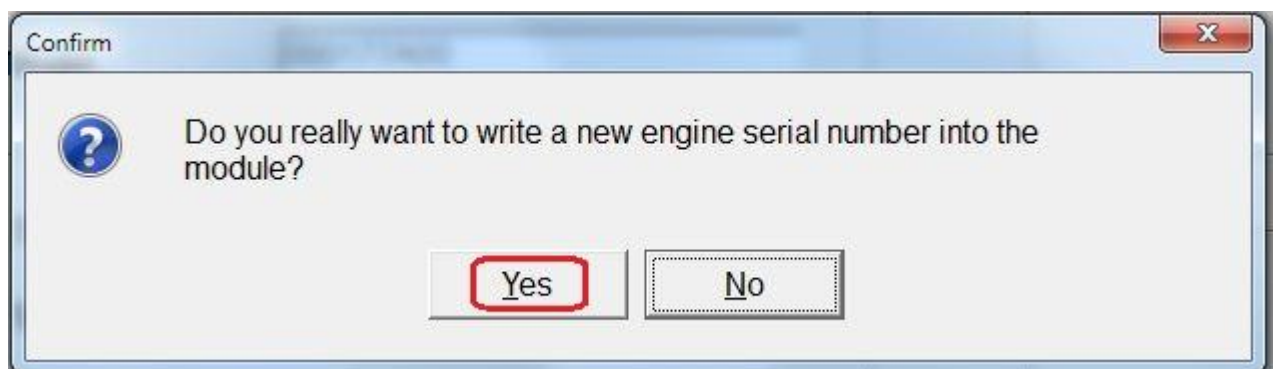
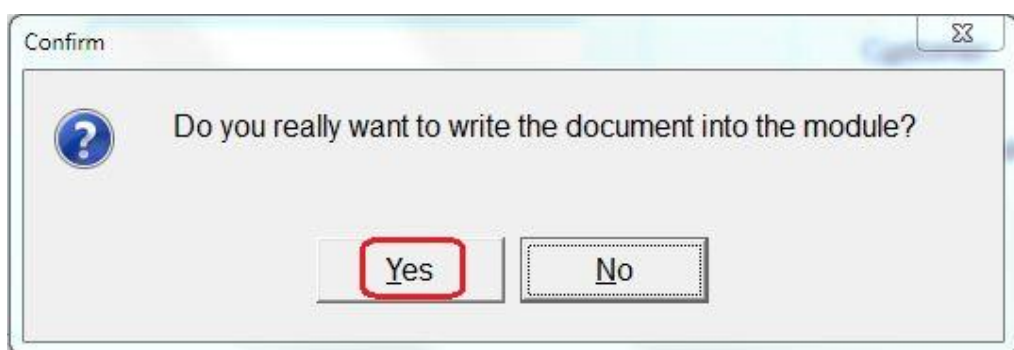
Model:



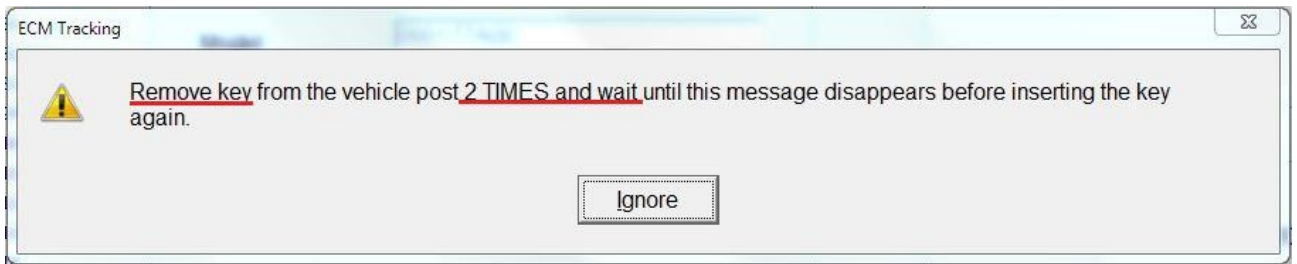
3.4 Enter the **VIN** number, **Engine** number, **Customer** Name and click on "**Write Data**".



3.5 Confirm your choice.

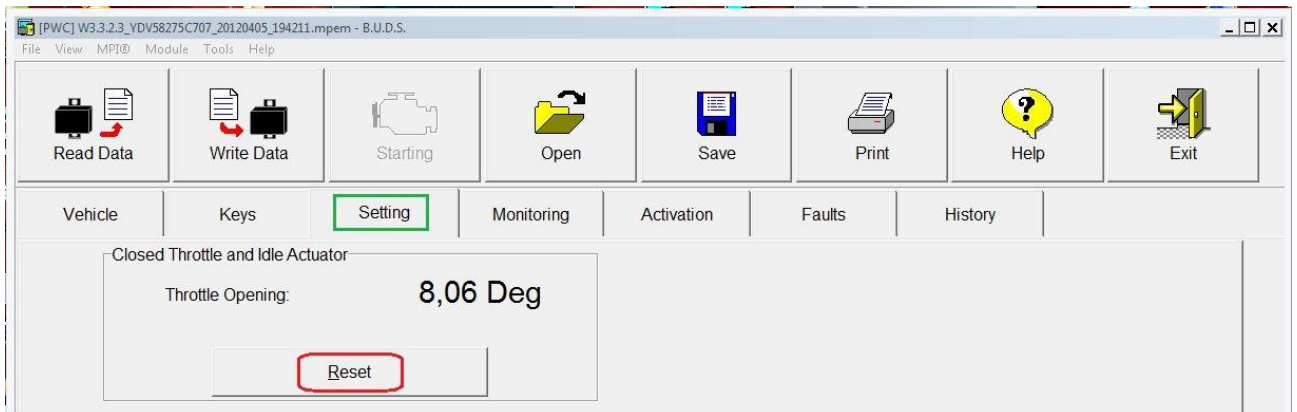


3.6 Remove **DESS-key** from the vehicle post **2 TIMES** (remove – insert - remove) and wait.



After the message disappear, insert the **DESS-key** again.

3.7 Click the tab "**Settings**" and make resetting the throttle position by clicking "**Reset**".



3.8 Remove **DESS-key** from the vehicle post and wait.



After the message disappear, insert the **DESS-key** again and close **B.U.D.S.** by clicking on "**Exit**".

Part 4.

Recover specific configuration model of the vehicle.

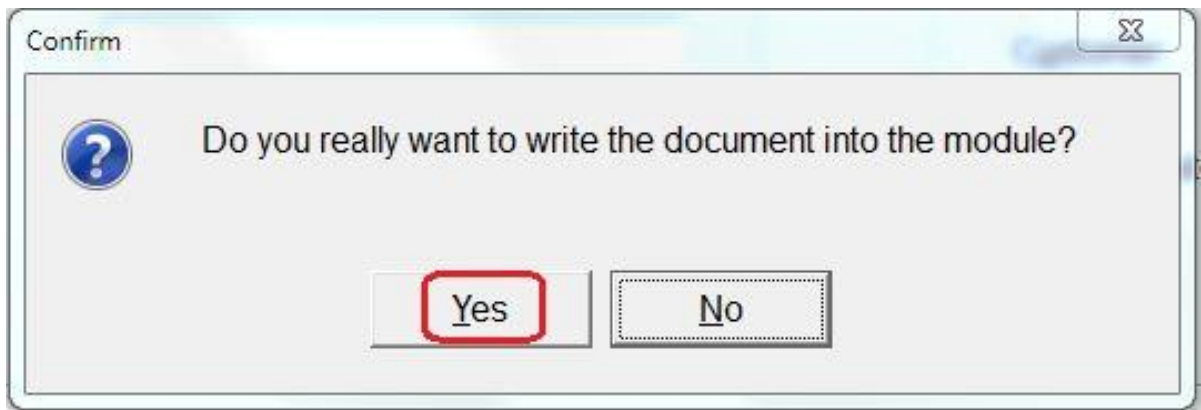
4.1 Run **B.U.D.S.** program with the privilege **Megatech**.

4.2 Click on **“Read Data”**.

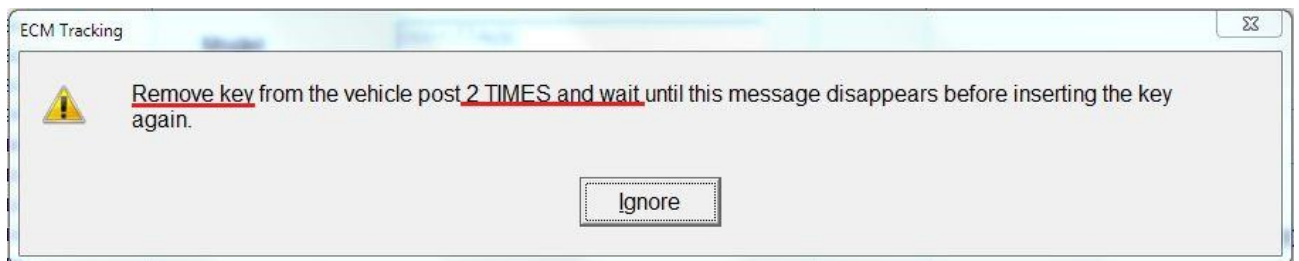
4.3 Open tab **“Advanced”** and restore **all data** from saved screenshot (**part 1.8**).

4.4 Click on **“Write Data”**.

4.5 Confirm your choice.



4.5 Remove **DESS-key** from the vehicle post **2 TIMES** (remove – insert - remove) and wait.



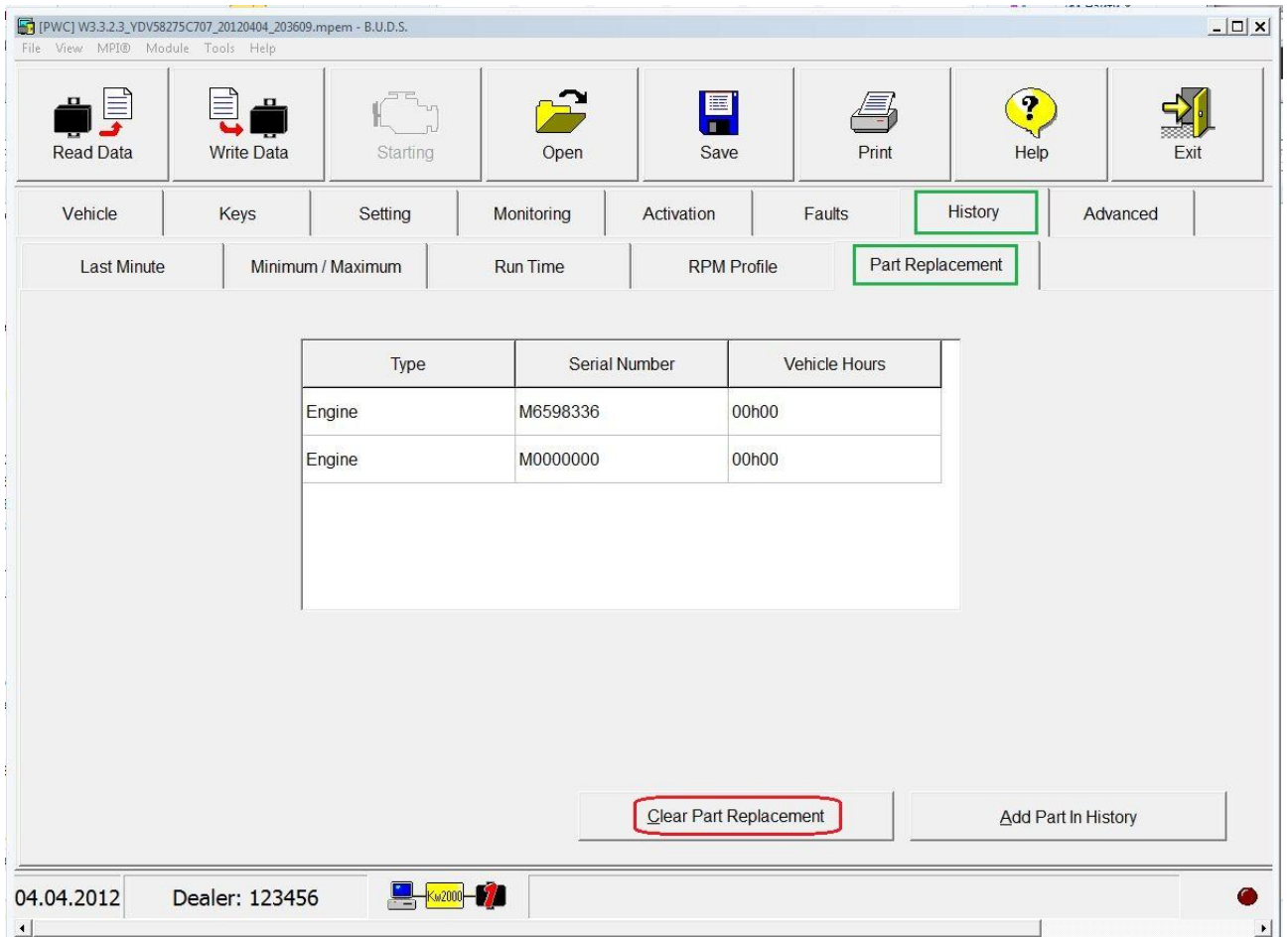
After the message disappear, insert the **DESS-key** again.

If near the tab **“ECM Coding”** are more tabs, you need to restore all those data too, by repeating of steps 4.3 – 4.5.

Part 5.

Resetting the history of the parts replacement.

5.1 Open tab “History” → “Part Replacement” and click on “Clear Part Replacement”.



5.2 Confirm your choice.



5.3 Remove **DESS-key** from the vehicle post and wait.



After the message disappear, insert the **DESS-key** again and close **B.U.D.S.** by clicking on “Exit”.

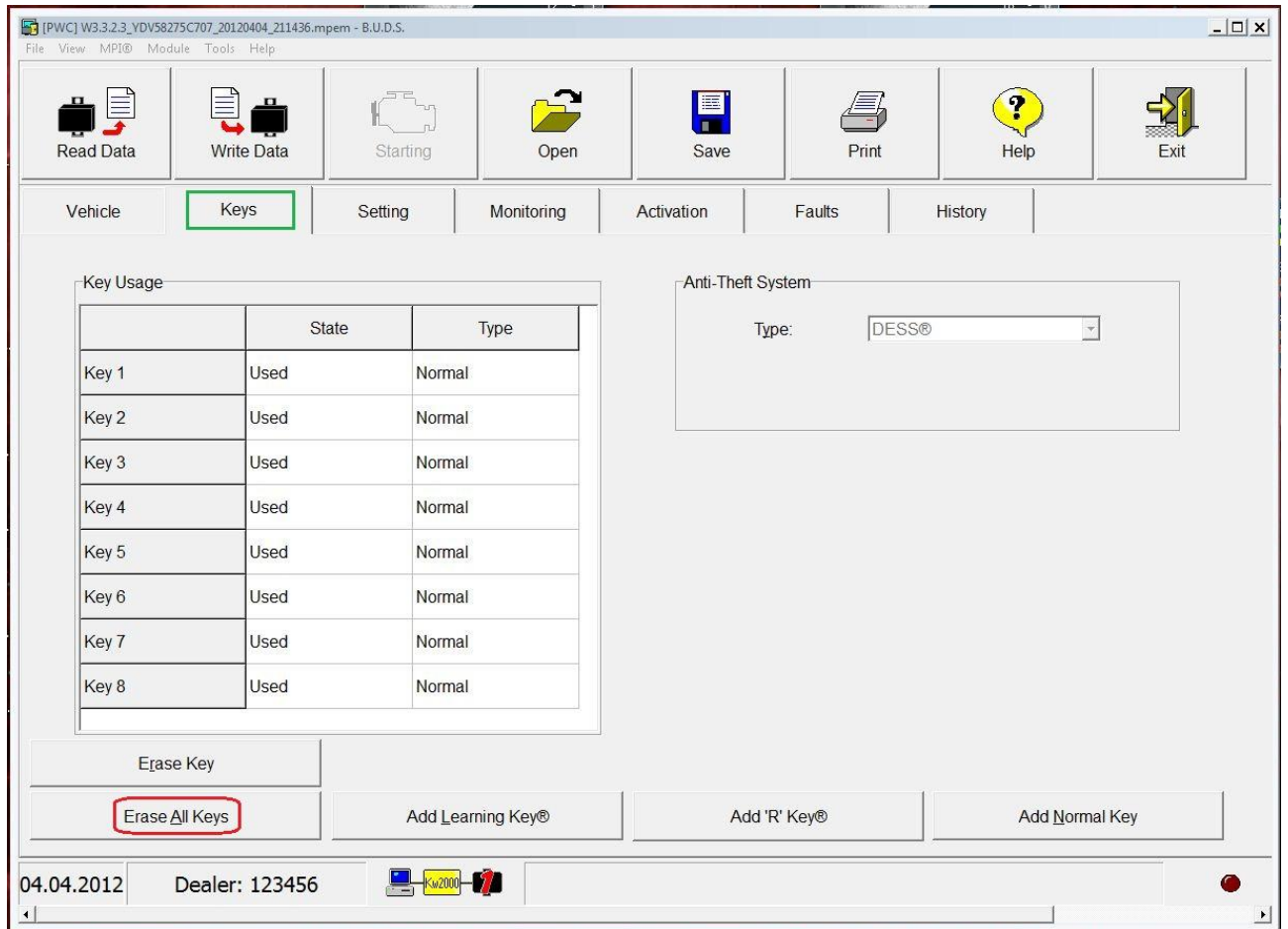
Part 6. Add DESS-keys.

To add DESS-keys, use the **DESS Post Interface**.

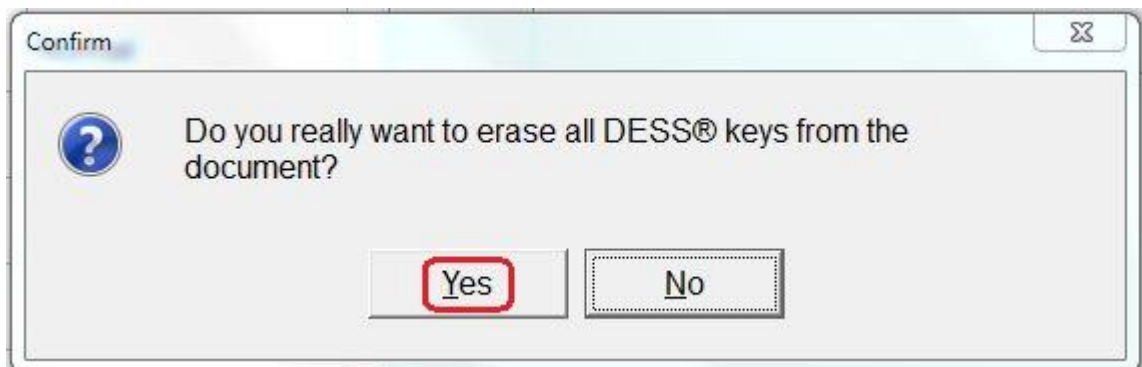
6.1 Connect **DESS Post Interface** to **MPI-2 adapter** and to the **diagnostic connector** of the vehicle.

6.2 Run the **B.U.D.S.** program with the privilege **PWC Dealer & Sport Boat Dealer**.

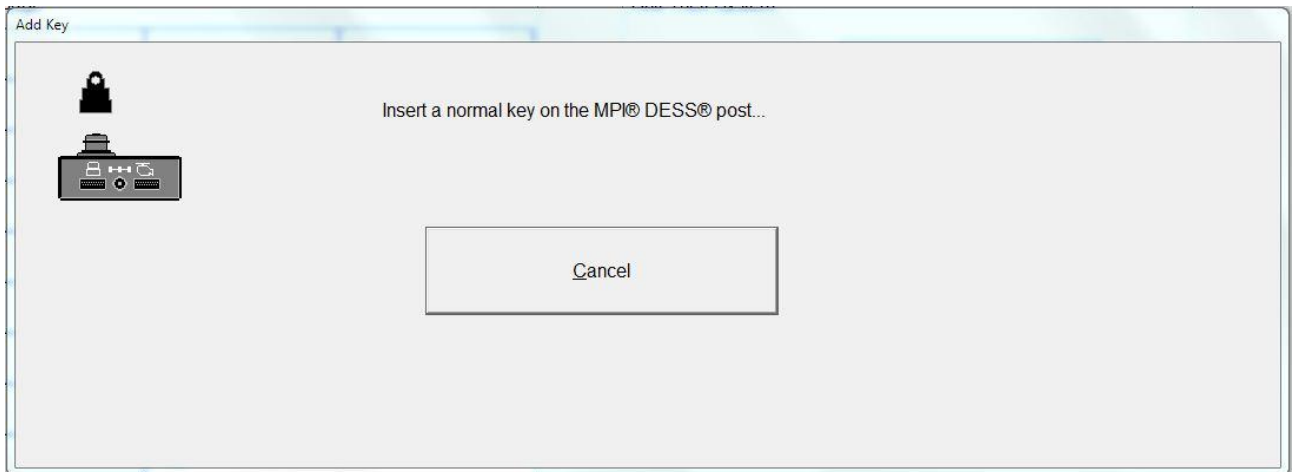
6.3 Open the tab "**Keys**" and click on "**Erase All keys**".



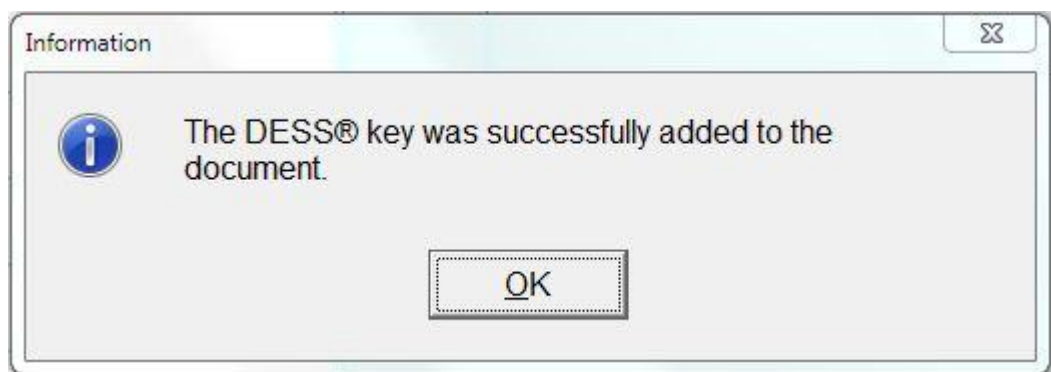
6.4 Confirm your choice.



6.5 Click on “**Add Normal Key**”.



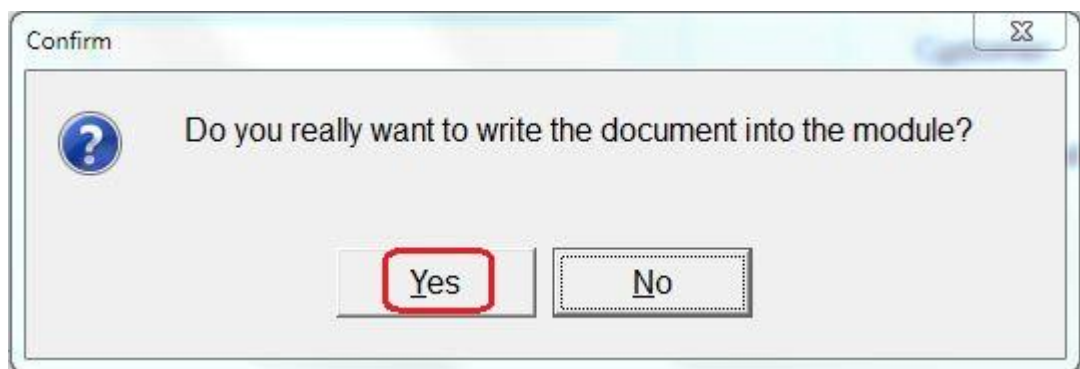
6.6 Remove **DESS-key** from the vehicle post and insert to "**Safety Switch**" of **DESS Post Interface**.



6.7 Click “**OK**”. Remove **DESS-key** from the "**Safety Switch**" of **DESS Post Interface** and insert to vehicle post again.

6.8 Click on “**Write Data**”.

6.9 Confirm your choice.



6.10 Remove **DESS-key** from the vehicle post and wait.

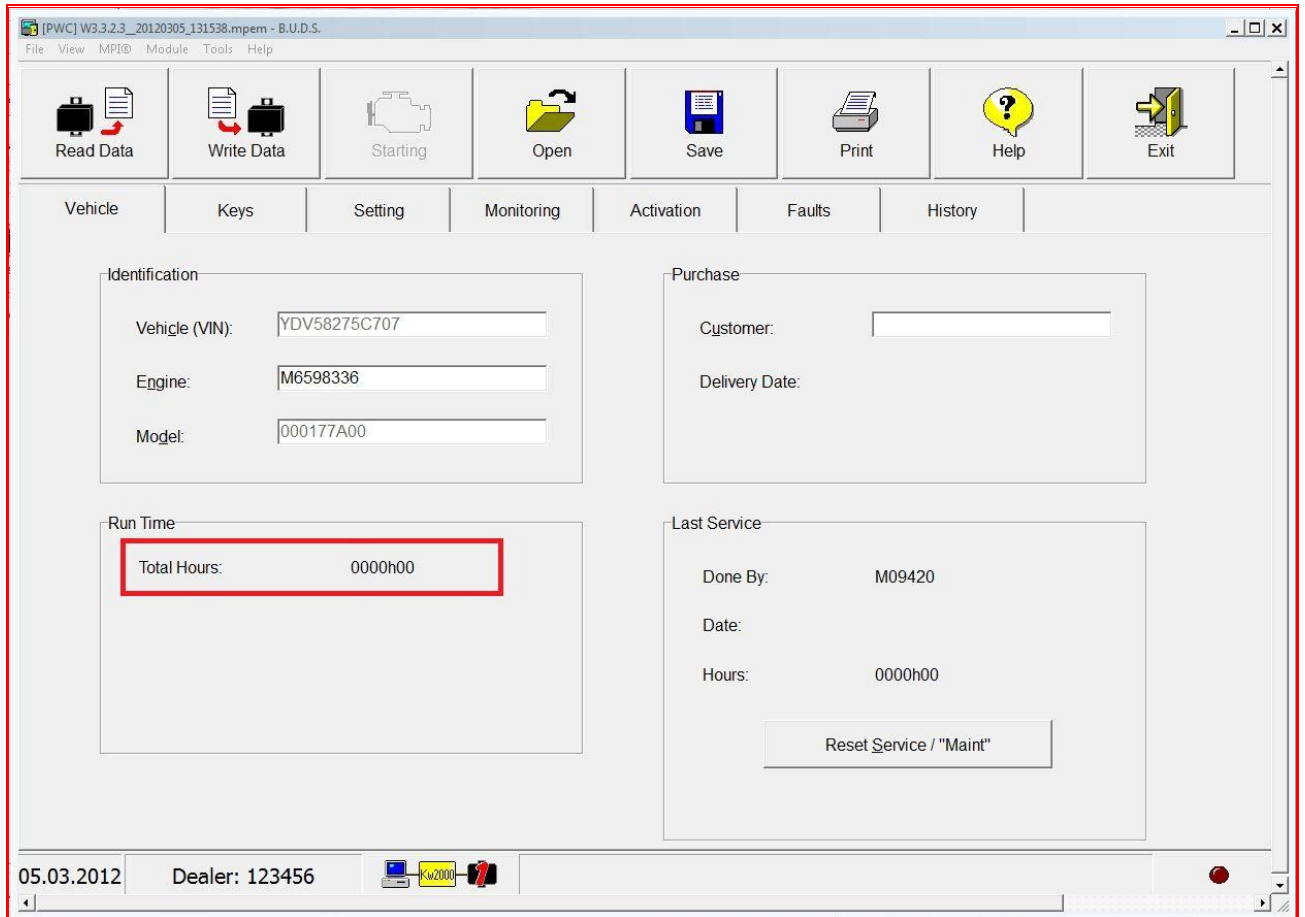


After the message disappear, insert the **DESS-key** again.

To Add more keys - repeat steps 6.5 – 6.10 .

That's all!

As result you will get this:



You now have a module ECM with “0” hours and clean history of Part Replacement!!!

Using the program **DIUS Flasher** with a license **Repair or Master**, and using the program **B.U.D.S.** with privileges **MEGATECH**, you can use one ECM module on different models of vehicles.