



SKI-DOO Updating a digital display that shows DESS" Scrolls "VIN DOES NOT MATCH"_139448

Summary:

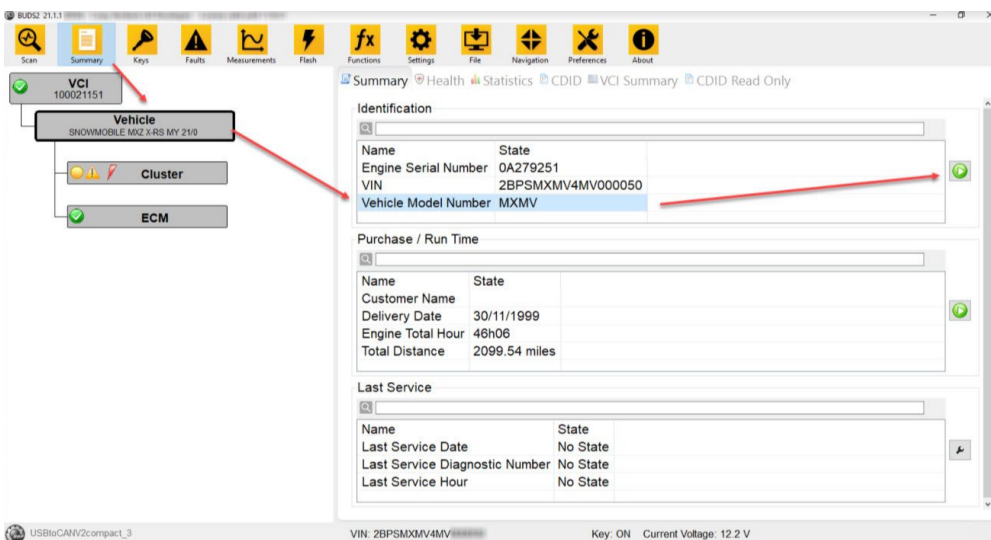
Procedure on Updating a digital display that shows DESS" Scrolls "VIN DOES NOT MATCH"

Type:

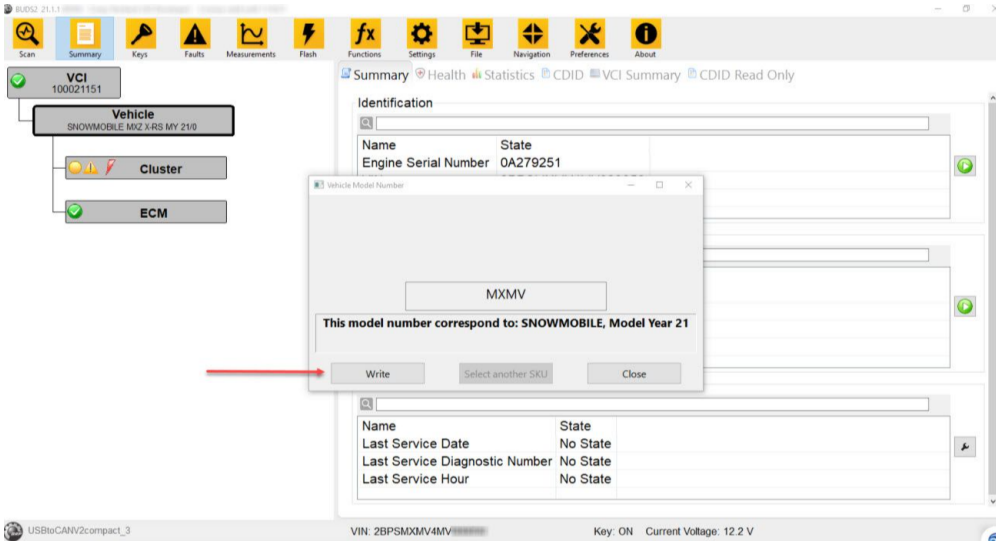
General

TST Detail:

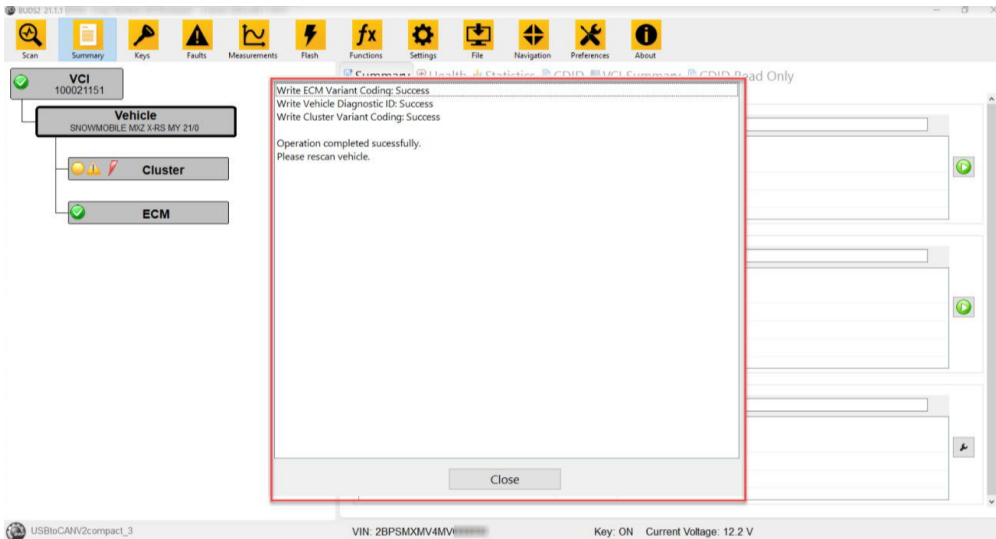
1. First and foremost always be sure to have the latest version of BUDS
2. Scan and click on the summary page
3. Double click on Model Number or highlight and click on the play button (as per arrows)



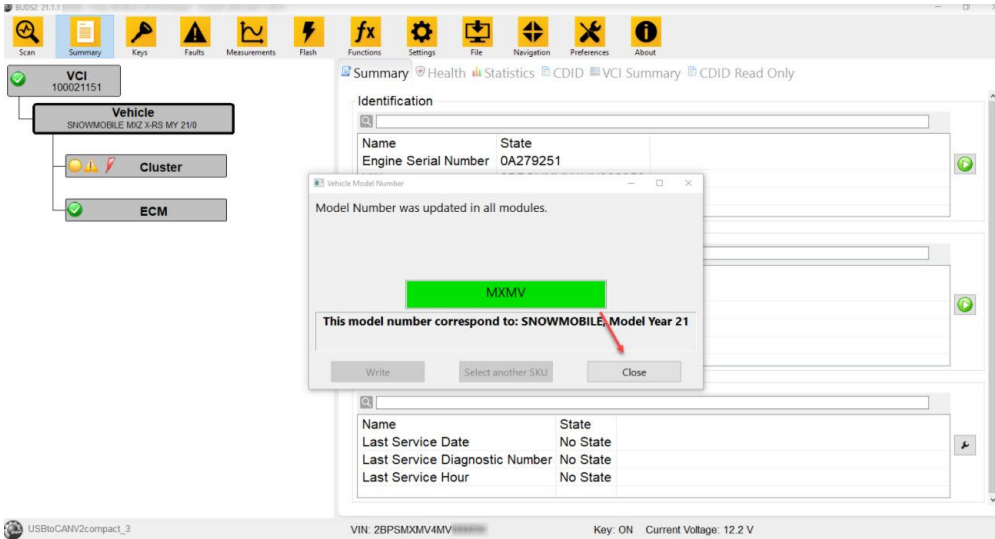
4. Vehicle Model Number will appear, then click write



5. Success once rewritten window will appear



6. Model Number will be in green then click close



7. Powerdone the unit
8. Re-scan the unit
9. The message is removed once this has been performed.

Attachment:

First Published By: on 2021-10-29
Last Modified By: on 2021-11-30