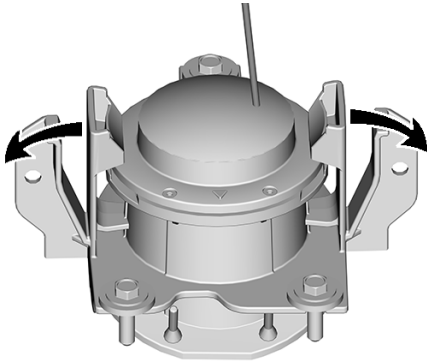


Transducer

Transducer

Removing the Transducer

1. Open the tabs and lift the transducer.

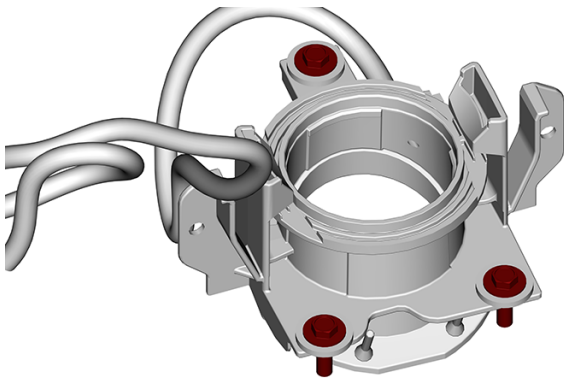


Inspecting the Transducer Support

1. Inspect the transducer support. Look for cracks or deformation. Replace if damage is found.

Removing Transducer Support (Polytec Hull)

1. Remove transducer. refer to *Removing the Transducer* in this subsection.
2. Remove the transducer support mounting screws.

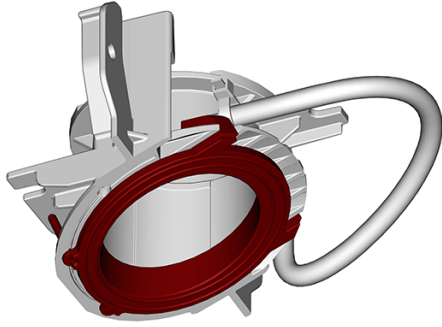


3. Remove the transducer support.

Installing Transducer Support (Polytec Hull)

The installation is the reverse of the removal procedure. However, pay attention to the following.

1. Install a new support seal.



2. Tighten screws to specification.

Tightening Torque	
Transducer support screw	3.5 ± 0.5 Nm (31 ± 4 lbf-in)

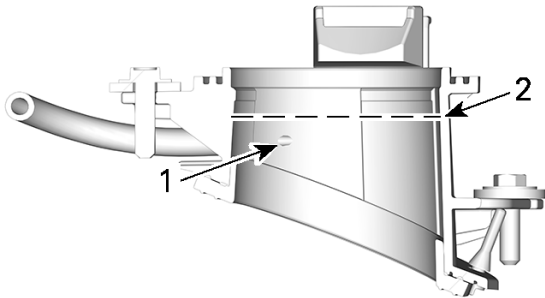
3. Install the transducer. Refer to *Installing the Transducer* in this subsection.

Installing the Transducer

The installation is the reverse of the removal procedure. However, pay attention to the following.

1. Fill the transducer support to cover the vent with coolant.

Service Product	
Extended Life Pre-Mixed Coolant (P/N 779150)	Approx. 135 ml (4.75 fl oz (US))



1. Vent orifice
2. Fill line

2. Wipe any spill that may occur.